



Netherlands School of Public
Health and Care Research

Annual CaRe Days

29-30 May 2024

Eindhoven



Amsterdam Public Health



Care and Public Health Research Institute



NIVEL
Kennis voor betere zorg

Radboudumc

EMPOWERING HEALTH CARE TRANSITION

Our Research as a Catalyst for Transformation

WEDNESDAY 29 MAY 2024

09.30h-10.00h Welcome and registration

10.00h-10.10h Opening by prof. Onno van Schayck, Scientific Director CaRe

10.10h-12.30h Prof Mark Levels - Interactive session
The influence of AI on health and health care

12.30h-13.30h Lunch

13.30h-14.15h Prof Karien Stronks
Health and health care in different populations. The influence of socio-economic status

14.30h-15.15h Parallel sessions | PhD students present their work (part 1)
Ensuring quality and safety in Healthcare
Room: Cocagne 1 | Chair: Bart Kiemeney
This session examines projects focused on evaluating and improving the quality and safety of healthcare services, with a focus on developing quality indicators, enhancing patient safety, and improving care standards.

Rosanne Vosters (CAPHRI)	Facilitators for and barriers to multidisciplinary quality improvement in the care for older people in nursing homes: A systematic review
Nienke Zinger (Nivel)	Quality of care for people detained in police custody: the development of quality indicators
Karlijn van Beekum (Nivel)	Patient safety and medical technology: An exploratory interview study about the policy for safe application and risks and opportunities for patient safety

Health care delivery

Room: Cocagne 2 | Chair: Roland Friele
This session highlights projects that investigate innovations and improvements in healthcare delivery methods, including inter-professional collaboration, task shifting, and tool development.

Mana Nasori (APH)	Path to tailored care: interprofessional collaboration and education with parents as experts
Lisa Jansen (Nivel)	The formation of general practice chains mapped
Renate Wit (Nivel)	Task shifting from physicians to Dutch nurses: a repeated cross-sectional analysis
Laura Vriese (CAPHRI)	Discussing preferences with patients with limited health literacy in general practices

Involving and empowering patients

Room: Ampère | Chair: Óscar Brito Fernandes
This session focuses on projects aimed at enhancing patient involvement, empowerment, and participation in healthcare decision-making processes.

Jeffrey Bouwmeester (Radboudumc)	Collaboration of Citizen Initiatives for local health and primary care providers: a Rapid Realist Review
Esmée Vesseyer (APH)	EMpower parents: Effectiveness of brief EMDR treatment for parental PTSD related to their child's medical condition: A randomized controlled trial
Dorinde Korteling (APH)	Patient Reported Outcomes measured in Pediatric Physical Therapy: A Scoping Review
Nizar Alsubahi (CAPHRI)	Patient-Centered Care and Satisfaction of Patients with Diabetes: Insights from a Survey among Patients at Primary Healthcare Centers in Saudi Arabia

Patients and their context

Room: Lumière | Chair: Silvia Evers

This session explores projects that delve into patients' social, economic, and community contexts to better understand their healthcare needs and experiences.

- | | |
|---------------------------------------|--|
| Eva Aalbers
(Nivel) | Medication self-management and workforce participation among people with a chronic condition |
| Valerie Debie
(CAPHRI) | A holistic approach to osteoarthritis care: Expanding the Assessment of Burden of Chronic Condition tool |
| Merel van Eick
(APH) | Strategies for treatment decision-making among esophagogastric cancer patients with limited health literacy: Findings from a qualitative study |
| Laura Boogaard
(Radboudumc) | Exploring the burden of infectious disease of EU-11 labour migrants and related healthcare needs, utilisation and experiences |

15.15h-15.35h **Coffee/tea Break**

15.40h-16.25h Parallel sessions | PhD students present their work (part 2)

Ensuring quality and safety in Healthcare

Room: Cocagne 1 | Chair: Bart Kiemeney

- | | |
|---|---|
| Ilja Brugman
(Nivel) | Insights in implemented process measures for ensuring safe anticoagulation hospital care: a qualitative interview study – preliminary results |
| Candan Kendir
(APH) | Assuring quality of (primary) care through patient-reported measurement in the OECD countries |
| Jessica Aguilar Diaz
(Radboudumc) | Pandemic preparedness: potential of general practice data from electronic patient records for an early warning system of infectious diseases – a proof of concept study |

Health care delivery

Room: Cocagne 2 | Chair: Roland Friele

- | | |
|---|--|
| Esmée Vaes
(CAPHRI) | Exploring directions and opportunities for innovation of the diagnostic process in primary care – a qualitative study using change lab methodology |
| Wieke Ligtenberg
(Radboudumc) | Physicians lived experiences in providing euthanasia |
| Anneloes Bal
(Radboudumc) | Interorganizational collaboration in healthcare |

Involving and empowering patients

Room: Ampère | Chair: Óscar Brito Fernandes

- | | |
|--------------------------------------|---|
| Jet Westerink
(Radboudumc) | Improving Patient Participation within Value Improvement teams: an Action Research study |
| Merel Engelaar
(Nivel) | Patient and Public Involvement in Quality of Life research: lessons learned from collaborating with cancer patients and informal caregivers in the consensus process of the EUonQoL-Kit |
| Selina Limmen
(APH) | Development of a Coreset Patient Reported Outcomes and Patient Reported Outcome Measures in Pediatric Physical Therapy |

Patients and their context

Room: Lumière | Chair: Silvia Evers

- | | |
|------------------------------------|---|
| Laurens Reumers
(CAPHRI) | Quantifying reciprocal relationships between poverty and health: longitudinal estimation and projection |
| Quincy Merx
(CAPHRI) | The power of connectedness: Vital communities for people with long-term care needs |
| Nienke de Graef
(CAPHRI) | Understanding shared decision-making among patients with low health literacy: A realist review |

16.30h-17.15h Prof. Cordula Wagner & Dr. Frank van Leth
Becoming a Transformer: a quest

17.15h-18.00h **Drinks**

THURSDAY 30 MAY 2023

09.00h-09.30h Welcome and registration

09.30h-09.45h Opening by Prof Onno van Schayck, Scientific Director CaRe
Introduction new CaRe visiting professor: Prof Hugh Montgomery

09.45h-10.15h Care Award 2024 by Prof Chris van Weel, chair of the jury

10.15h-11.00h Prof Jet Bussemaker
Pathways to Impact. Less care, more health and less science, more knowledge

11.00h-11.20h Coffee/tea Break

11.20h-11.50h Presentations of the top 3 interventions of day 1

11.50h-12.20h Prof Marco Varkevisser
Financial sustainability in health care: tough choices are inevitable!

12.20h-12.30h Announcement of the winners of the best AI- solution/advice (day 1)

12.30h-13.30h Lunch

13.30h-15.00h Three Parallel sessions

- Maartje Luijten (*Cocagne 2*)
The wellbeing carousel
- Daan van Kooten (*Ampère/Lumière*)
ChatGPT: Opportunities and Risks for Researchers
- Nienke de Graef, Rowan Smeets & Arianne Elissen (*Cocagne 1*)
Uncovering the black box: The potential of stakeholder engagement in Realist Evaluation

15.25h-16.10h Prof Jan Kremer
Appropriate care as the heart of the healthcare transition

16.10h-17.15h Drinks



Onno van Schayck

Professor Preventive Medicine

Scientific Director CaRe

Maastricht University

Department of Family Medicine

Phone: + 31 (0) 43 388 2152

onno.vanschayck@maastrichtuniversity.nl

<http://www.researchschoolcare.nl/>

Prof. Dr. Onno van Schayck is born in Sorong Irian Jaya (New Guinea) on 16 April 1958. After obtaining his PhD on the Faculty of Medicine of the University of Nijmegen (The Netherlands) he started in 1990 as research coordinator at the Department of General Practice of the University of Nijmegen and since 1996 also at the Department of General Practice of the University of Maastricht. In 1998 he was appointed as professor of medicine of the Faculty of Medicine of the University of Maastricht and the University of Nijmegen. The past 25 years he has been in charge over 60 research projects especially concerning the diagnosis and treatment of asthma and COPD and smoking cessation in primary care. He was promotor of 70 PhD students.

Since 1990, Van Schayck has published more than 500 papers in peer reviewed international journals, among which the highest impact medical journals such as the New England Journal of Medicine, The Lancet, the British Medical Journal (BMJ) and the Journal of the American Medical Association (JAMA). Total funding obtained until 2015 adds up to 46 million Euro governmental and charity grants.

In 1999 he was appointed in the board of the Faculty of Medicine of the University of Maastricht and on 1 October 2000 he became Scientific Director of the Care and Public Health Research Institute (CAPHRI). He was chair or member of many national scientific advisory boards (4-6th Framework EU Funding, Zon MW, Vidi, TOP, Lung Foundation) and the Dutch Health Council. In 2013 he was appointed as Scientific Director of the Netherlands School of Public Health and Care research.



Chris van Weel

Emeritus Professor General Practice
Department of primary and community care
Radboud University Medical Center
117-ELG, PO BOX 9101
6500 HB Nijmegen, the Netherlands
chris.vanweel@radboudumc.nl

Chris van Weel graduated from Leiden University in 1973 and started practicing as GP in the Ommoord community health centre in Rotterdam that same year and worked full time in that practice until 1985. In 1981 he obtained his PhD at the Erasmus University, Rotterdam, on a practice based study of prevention.

In 1985 he was appointed professor of general practice at the Radboud University Nijmegen, and was head of department from 1988 – his retirement in 2012. In 1995 he was a co-founder of the Netherlands School of Primary Care Research – currently Public Health and Care Research – CaRe. Since 2013 he is also affiliated with the Australian National University: initially as professor of primary health care research, currently in an honorary appointment.

From 2007 – 2010 he was president World Organization of Family Doctors, WONCA, after serving that organization as chair of its working party on research 1984 – 1998, and as president of European region, 1998 - 2001.

His research has focused on primary care morbidity, multi-morbidity/co-morbidity and long-term outcome of chronic illness in family practice. The Nijmegen academic practice network of the continuous morbidity registration – Nijmegen monitoring project played a central role in this research.

Currently he is the chair of the board of *CaRe*, member of supervisory board of *Q-C Support* for people suffering from long-term effects of Q-fever and Covid-19, and chair of the scientific board of *Inzicht*.



Mark Levels

Prof. dr. Mark Levels is university dean for lifelong development of Maastricht University, professor of sociology of technology, and program director of the Research Centre for Education and the Labor Market (ROA) of Maastricht University. He is a member of the ROA management team and a fellow of the Berlin Social Science Centre (WZB) and the Graduate School of Business and Economics (GSBE) of Maastricht University. He teaches sociology at University College Maastricht (UCM).

m.levels@maastrichtuniversity.nl

Mark Levels (1977) is a Dutch sociologist. He uses quantitative, qualitative and experimental sociological methods to study how governments can best solve pressing societal challenges, and works with governments, corporations, social partners, and other scientists to create evidence informed policies that instigate social change necessary to address these challenges.

Levels' fundamental research programs explore the causes and policy solutions of pressing societal challenges, including (a) how to govern the impact of ai on labor markets and societies, (b) how to design education systems to ensure excellent education and reduce educational inequity, (c) how to combat labor market inefficiencies, (d) how to stimulate the labor market integration of vulnerable youth, (e) how to further the societal integration of immigrant children, (f) how to promote youth mental health and physical fitness, and (g) how to birth control and reproductive health. His work has been published in books and top-tier journals, has received prizes for scientific excellence and societal impact, and is supported by grants from highly competitive grant competitions from the NWO, NRO, DFG, JSPS, ANR, and H2020, as well as direct contributions from governments and corporations.

Levels serves as an advisor to governments, international organisations, firms, labour unions, and NGO's. To achieve sustainable societal impact, he creates and leads transdisciplinary programs that produce scientific evidence to inform policies. For example, in 2016 he founded and led an international consortium of scholars that studied how artificial intelligence will impact work, and studied which education and welfare policies European governments can use to maximise economic gains while minimizing societal risk (TECHNEQUALITY). Professor Levels was also one of the principal architects and national coordinators of the Nationaal Cohortonderzoek Onderwijs (NCO), which is one of the largest data sets on education in the world, and a prime resource for Dutch schools to evaluate their performance. Levels was also one of the instigators and key designers of the LLO Katalysator, a nation-wide action plan to empower Dutch vocational schools and universities to build effective and relevant continuing education programs to meet labor market needs and facilitate the green transition and automation. Professor Levels has held visiting positions at the European University Institute in Florence (2005), Nuffield College, University of Oxford (2008, 2014-2020), the Kennedy School of Governance of Harvard (2013), and the German College for Interdisciplinary Education Research (2013-2015). Before being appointed as full professor in 2018, Levels has been a postdoc (2011-2016), a senior researcher (2016-2017), and an associate professor (2018) at Maastricht University. Before coming to Maastricht in 2011, he taught sociology as an assistant professor at Radboud University, was a junior researcher with the Interuniversity Centre for Social Science Theory and Methodology (ICS), and served as a member of the governing board and curriculum committee of the Nijmegen sociology department. Before starting an academic career, Levels served in an infantry guards regiment of the Royal Dutch Army. He deployed as a machine gun operator to Kosovo for NATO in 2000.



Karien Stronks

Professor of Public Health
Dept. of Public and Occupational Health, Locatie VUmc
Amsterdam UMC
Medische Faculteit / Public and Occupational Health
Van der Boechorststraat 7 / 1081 BT Amsterdam
k.stronks@amsterdamumc.nl

Karien Stronks seeks to generate evidence on how the position of an individual in society impacts his/her health and – at the population level – leads to inequalities in health. For 30 years, she has focused on understanding why health inequalities arise and how to effectively combat them. During the last 15 years, she has undertaken this task as Professor of Public Health. Stronks completed observational studies using a wide range of study designs (cross-sectional and cohort studies, international comparative studies, questionnaire validation, qualitative studies) to map the mechanisms underlying socio-economic and ethnic inequalities in health, related to biomedical (e.g. cardiovascular risks), behavioural (e.g. dietary habits) and psychosocial factors (e.g. discrimination), and health care (e.g. adverse events). Furthermore, she has studied the effectiveness of possible strategies to prevent these inequalities from arising, through randomised controlled trials (e.g. culturally targeted intervention to prevent type 2 diabetes mellitus), natural experiments (e.g. impact of urban regeneration programme on mental health), developmental evaluations (e.g. role of a knowledge broker in health policy at the local level) and process evaluations (e.g. conditions for a successful development of intersectoral local health policy). To embrace the complexity of public health problems (Stronks & Nicolaou, Lancet Public Health 2018), Stronks has recently applied ‘systems science’ tools - including computational models - to understand inequalities as well as to develop strategies to effectively reduce them.



Cordula Wagner

Voorzitter raad van bestuur Nivel,
Professor of patient safety, VU/Amsterdam UMC,
Head research centre Safety4Patients
Telephone: +31 30 2729665
E-mail: c.wagner@nivel.nl

I'm a health services researcher and principal investigator who has supervised a large variety of national and international research projects in the field of quality management, change management and patient safety in health care, especially hospital care. Originally, I've studied physiotherapy and sociology.

My main interest is the improvement of organisational structures and cultures to improve health care for patients. Therefore, it is important to find and evaluate valuable solutions improving healthcare for patients and supporting stakeholders engaged in healthcare. Based on scientific evidence, I strive for new knowledge and products supporting healthcare professionals and policy makers in their work, as well as monitoring day-to-day quality, safety risks and compliance to improve the sustainability of the healthcare system.



Frank van Leth

Associate Professor health sciences
Faculty of Science, Department of Health Sciences
Vice-director Amsterdam Public Health research institute (APH)
Telephone: +31 20-598 1850
E-mail: f.c.m.vanleth@vu.nl
www.frankvanleth.com
twitter: @FvScience

Frank van Leth is an associate professor Health Science at Vrije Universiteit Amsterdam, where he is heading the section International Health in the Department of Health Sciences. Since 2021, he is one of the two vice-directors of Amsterdam Public Health research institute (APH).

Trained as a Medical Doctor in the field of Tropical Medicine, he worked as a Medical Office in-charge of a missionary hospital in Western Kenya. Upon his return, he pursued training in epidemiology at the London School of Hygiene and Tropical Medicine.

His research work is on the intersection of infectious diseases, research methodology, and social science. Having spent the earlier parts of his research career mainly on HIV and tuberculosis, his current activities revolve around antimicrobial resistance, and especially the surveillance thereof. A second line of research activities revolves around syndemics, the complex interaction between synergistic detrimental health states and structural factors. The syndemics under study all revolve around HIV disease in sub-Saharan Africa.

He has been chairman of TBnet, a European consortium consisting of clinicians, epidemiologist, biomedical scientists, and public health experts in the field of tuberculosis. Currently he is an Associate Editor for the Journal of Epidemiology and Community Health.



Jet Bussemaker

Leiden University/LUMC

ORCID: 0000-0002-7496-1627

M.Bussemaker@lumc.nl

Prof.dr. Jet (Mariëtte) Bussemaker has both a career in academics and in politics.

She studies political and social science (cum laude) at the University of Amsterdam and obtained her PhD at the same university. She worked as a research at the University of Amsterdam and the Vrije Universiteit in Amsterdam. Since 2018 she is Full Professor of Policy, Science and Societal Impact at the Public Health and Primary Care (PHEG) department of the Leiden University Medical Center (LUMC) and at the Institute of Governance of the Department of Governance and Global Affairs, Leiden University. Her research focuses on transition in complex societal problems implementation of policies and their societal outcomes. She is also chair of the local The Hague collaboration program 'Gezond en Gelukkig Den Haag' (healthy and Happy The Hague): the Municipality, care-providers - from general practitioners, nursing homes, welfare organizations and hospitals – and health insurances work together with resident groups and knowledge institutions on prevention and improvement of health and wellbeing.

Next to her position as Professor, she is President of the Council for Healthcare and Society, a national advisory council for Parliament and the government.

She is also a member of the advisory board of the NWO, advisory member of the Council for Medical Science of the KNAW and chair of the ZonMW program on dementia.

Her political career started in 1998, when she became a member of parliament for the Partij van de Arbeid.). From 2007-2010 she served as the State Secretary for Public Health, Welfare and Sport. Bussemaker was Minister of Education, Science and Healthcare in de Rutte II Government (2012-2017). About her political experiences she published the book Ministerie of Verbeelding. Idealen en de politiek praktijk (2021).

From 2010-2012, she was a member of the Executive Board of the University of Amsterdam and Principle of the University of Applied Science and a Crown-member of the Social Economic Council (SER).



Marco Varkevisser

Professor of Health Care Market Regulation
Erasmus School of Health Policy & Management (ESHPM)
Erasmus Centre for Health Economics Rotterdam (EsCHER)
Phone: + 31 (0) 10 408 9105
varkevisser@eshpm.eur.nl
<http://www.eur.nl/eshpm>

Prof. dr. Marco Varkevisser (1974) studied Economics at Erasmus University Rotterdam (EUR). He is now professor of Health Care Market Regulation at Erasmus School of Health Policy & Management (ESHPM) and leads the Health Systems and Insurance (HSI) research group. In his teaching and research, he deals with the structure & financing of healthcare in general and the proper ordering of healthcare markets in particular. Central to this is the question what combination of market forces and regulation does optimal justice to the public interests of quality, accessibility, and affordability of care. In 2010, he obtained his PhD with a dissertation on patient choice behaviour, competition, and competition supervision in hospital care. A good connection between (health) economic theory and health policy is central to Varkevisser's research. He therefore frequently collaborates with policymakers, regulators, and stakeholders.



Daan van Kooten

Data Scientist

Nivel

Phone: + 31 (0) 6 500 55 363

d.vankooten@nivel.nl

<https://www.nivel.nl>

Daan is the lead data scientist at Nivel, actively participating in several research programs. His focus is in gathering, processing, and analyzing vast amounts of observational data from the records of primary care providers. He has a keen interest in research methodologies and statistics, with a particular focus on causality. Daan conducts various workshops on machine learning and large language models, and is a member of the 'Jonge Zorgdenktank' community. Additionally, he serves as the functional lead for junior data specialists at Nivel.

Prior to joining Nivel, he worked at Deloitte from 2018 to 2021 as a Data Analytics and Engineering Consultant, where he worked on various projects for different (international) clients in the areas of data analytics, data engineering, and data management. Daan's early career involved a data science position at the University Medical Center Utrecht from 2017 to 2018, where he conducted an extensive EHR data study on treatment variations for hypotension during surgery.

Educationally, Daan obtained a Master's degree in Epidemiology from Utrecht University, where he specialized in medical statistics and a major in artificial intelligence.



Rowan Smeets

Assistant Professor

Maastricht University

CAPHRI

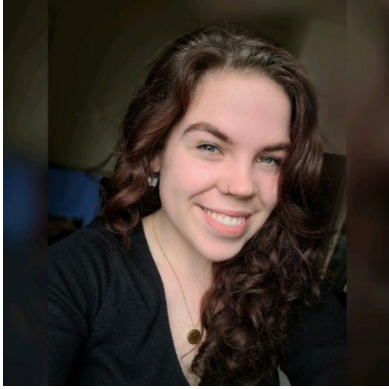
Department of Health Services Research

Phone: + 31 (0) 43 388 2199

Email: rowan.smeets@maastrichtuniversity.nl

Rowan Smeets was born in Sittard, the Netherlands, on December 8, 1993. In 2012, she started studying Health Sciences at the University of Maastricht, the Netherlands, and obtained her Bachelor's degree in 2015. Rowan was interested in both the field of health policy and governance, and prevention and health promotion. Therefore, from 2015, she combined two Master programs in the field of Health Sciences, which she obtained in 2017, i.e. Healthcare Policy Innovation and Management, and Health Education and Promotion.

During her study time, Rowan found out how much she enjoyed doing research that has a real impact on people and society. Therefore, she decided to apply for a PhD position at the department of Health Services Research at Maastricht University. She started her PhD trajectory in 2017 and studied the development and implementation of an integrated primary care program called TARGET, which was co-designed in cooperation with practice. After finishing her PhD in the beginning of 2023, she continued working at the same department. Since the summer of 2023, Rowan works as an Assistant Professor and combines research with teaching and science communication. Her scientific activities are still very much focused on integrated, person-centered care. In her academic work, she is in particular interested in the application and further development of realist evaluation, as a promising context-sensitive method to deliver valuable, transferable insights into the functioning of complex innovations. In the coming years, she aims to build a toolbox about realist evaluation and wants to make this research paradigm more accessible for a wide range of researchers working in the field of health and prevention.



Nienke de Graef

PhD candidate

Maastricht University

Department of Health Services Research

Phone: +31 43 388 4117

Nienke.degraef@maastrichtuniversity.nl

Nienke de Graef, born in Deventer, the Netherlands, on November 29, 1999, completed her Bachelor's in Medicine at Maastricht University in 2021. Motivated by her diverse experiences in healthcare, which deepened her appreciation for person-centred approaches, Nienke chose to pursue her passion for improving and transforming healthcare.

Driven by her dedication to fostering change, she completed a Master's degree in Healthcare Policy, Innovation, and Management at Maastricht University in 2023. Recognising the pivotal role of research in catalysing meaningful change, she embarked on a journey as a PhD candidate at CAPHRI at the department of Health Services Research, focusing on person-centred care. In her academic work, she touches on different methodologies with a specific interest in realism. Realism is a theory-driven approach to understanding complex interventions like those present in person-centred care. Together with her research team, she delves into shared decision-making among patients with low health literacy and type 2 diabetes, aiming to unravel the complexities of patient engagement and empowerment, ultimately contributing to a more inclusive and effective healthcare landscape.



Arianne Elissen

Associate Professor
Care and Public Health Research Institute (CAPHRI)
Maastricht University
Department of Health Services Research
Phone: + 31 (0) 43 388 1734
a.elissen@maastrichtuniversity.nl

Dr. Arianne Elissen has a master degree in Healthcare Policy, Economics and Management from the Faculty of Health, Medicine, and Life Sciences (FHML) of Maastricht University (The Netherlands). She obtained a PhD at the same faculty in 2013, based on an international study into real-world evaluation of integrated care approaches that was part of the European Seventh Framework Programme for research and technological development. She currently works as Associate Professor in Population Health Management at the Living Lab for Sustainable Care, which is part of Maastricht University's Care and Public Health Research Institute (CAPHRI). Within this Living Lab, she leads an interdisciplinary group of 10 researchers focused on improving the organization and evaluation of people-centered, integrated health and social care for specific populations.

Together with her team, dr. Elissen has published more than 40 papers in international peer-reviewed journals, including leading outlets in her field such as Health Policy and The Millbank Quarterly, and presented project findings at conferences such as Academy Health and the International Conference on Integrated Care. She is currently supervising five PhD candidates, who work on a range of projects in Population Health Management, funded by amongst others ZonMw, NWO, Zilveren Kruis, and the Province of Limburg. Within and across these projects, she aims to link research to practice, policy, and education. In 2021, Dr. Elissen was appointed as programme director of the master Healthcare Policy, Innovation and Management at FHML, which annually offers a multidisciplinary teaching programme to around 100 international students from diverse backgrounds. She is also management team member and vice-chair of the Department of Health Services Research.



Maartje Luijten

Associate Professor

Behavioural Science Institute (BSI)

Pedagogische Wetenschappen en Onderwijswetenschappen (PWO) | Radboud University

Phone: +31 (0) 24 361 2567

maartje.luijten2@ru.nl

Dr. Maartje Luijten obtained her PhD (Cum Laude) in 2012 at Erasmus University Rotterdam. She studied neurocognitive aspects and the development of addiction for over a decade. During her PhD and post-doc, Maartje conducted research at the University of Melbourne and the University of Cambridge for several months each. In 2013, Maartje began her journey as an assistant professor at Radboud University (BSI), where she was promoted to Associate Professor in 2023. Maartje secured various grants, including a Veni grant. In recent years, she expanded her research expertise to focus on resilience, well-being, and the importance of social relationships from a positive psychology perspective. Through her research and teaching, Maartje strives to have a positive impact on the well-being of youth and young adults. The combination of teaching and research greatly contributes to Maartje's job satisfaction. Research yields long-term impact, while teaching provides immediate value to individuals. Maartje is the mother of two energetic young boys and enjoys spending outdoor time with her family. Having experienced multiple herniated discs, she learned (the hard way) that taking care of oneself is a top priority. During a lengthy sabbatical in 2023, Maartje decided to contribute directly to the well-being of young academics by embarking on training to become a certified coach. Supporting the well-being of academics in various ways is one of the things that gives extra meaning to Maartje's work.



Jan Kremer

Professor Healthcare & Society, Radboudumc
Special Envoy Appropriate Care, Ministry of Health
Phone: + 31 (0) 243611111
jan.kremer@radboudumc.nl

Prof. dr. Jan Kremer studied biology and medicine and did his PhD on the neuroendocrinology of the puerperium (1991). He is gynaecologist by training and was head of the Nijmegen IVF centre for many years. He initiated the Digital IVF clinic in 2003 and launched a platform for personal health records in 2007.

His research focus shifted from reproductive medicine to patient-centred innovation. Kremer supervised 30 PhD students and is author of more than 200 PubMed publications.

Since 2011, he works at the intersection between policy and practice. First as chairman of the Quality Council of the Healthcare Institute (2015-2021) and a member of the Council for Health & Society (2014-2023) and currently as special envoy for appropriate care on behalf of the ministry of health. He is also chairman of the supervisory board of OLVG and member of the supervisory board of Espria and Ksyos.